



XpertVal[®] - 60channels

Temperature Block Lives
Excellent Stability and Speed

- Range of temperatures:
- -45 to 155 °C
 - 25 to 650 °C

Temperature Standard High Accuracy
RTD connected directly to the block for calibration and regulation

Validation Software XpertVal[®]
FDA 21 CFR Part 11 Compliant
A Secure and Efficient Way to Conduct Validation Studies

Data Logger with up to 3 Universal Module:

- thermocouples; PT 100;
- 4-20mA, 0-10V, 0-1V etc...



Software XpertVal[®]

Easy to Learn and Use – design consulted, reviewed, and influenced by validation personnel with “real” field experience.

Secure Access, Instrument Identification and Data Traceability – complete cross-reference of the instruments, users, and time of events for the calibration and test files. User identification (ID and password) required for system access and use. Audit trails generated automatically on event.

Automatic Thermocouple Calibration and Test Control – user-selected temperature block (e.g. Lives) and Temperature Reference Standard fully controlled by the software. Auto Start, Stop, and Test Data Reset user-configurable.

Data Protection – raw data stored in the internal memory of the data logger and in a protected file on the PC drive;

FDA 21 CFR Part 11 compliant

Calibration/Qualification/Statistical Reports, and Trends – user-configurable, generated automatically including during data acquisition.

Export & Import – administrator-configurable for calibration and test files. Data availability for custom reports and “off-line” data analyses.

GENERAL FEATURES : Comply with EC & USA thermal validation regulations
cGMP, EN554, EN285, HTM 2010 compliant

Hardware

Data Logger - Agilent manufactured by Agilent.
3 x 20 channels advanced built-in signal conditioning and removable, universal input module simplifies sensor connection and operation. Fully isolated, channel-to-channel, input-to-input, and input-to-ground circuitry. A sturdy chassis designed for a demanding industrial environment. Up to 60 channels available for thermocouples and other sensors (e.g. 0-5 VDC, 4-20 ma, etc.). Internal memory storage and fail-safe features protect collected data. Low-cost closed-case calibration assures reliability and traceability.

Temperature Reference Standard - Lives - a high accuracy RTD based reference probe.
Includes communication feature with the temperature block.

Can be connected to external display. Provides traceable measurement accuracy, portability, and rugged, field-proven design.

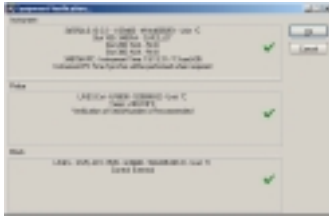
XpertVal[®] also controls Reference Thermometers and Smart Probes from other manufacturers.

Temperature Source, Dry-Block - Lives ATC Series
Range of temperatures: -45 to 155°C, -30 to 155 °C, 25 to 320 °C, or 25 to 650 °C.

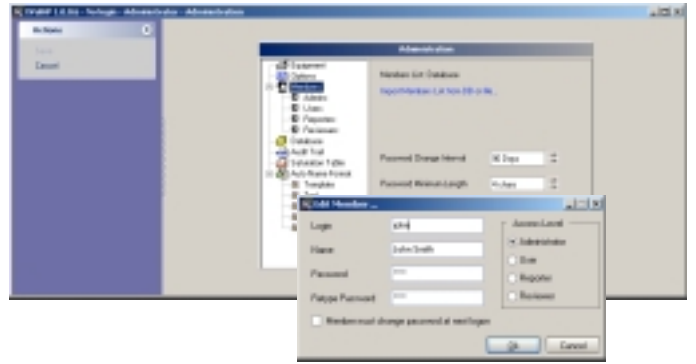
High Accuracy Dry-Block with Dual-Zone heating/cooling, large display, and advanced but simple-to-use features. The most stable, accurate, and fastest temperature dry-block

XpertVal[®] also controls baths and blocks from other manufacturers.

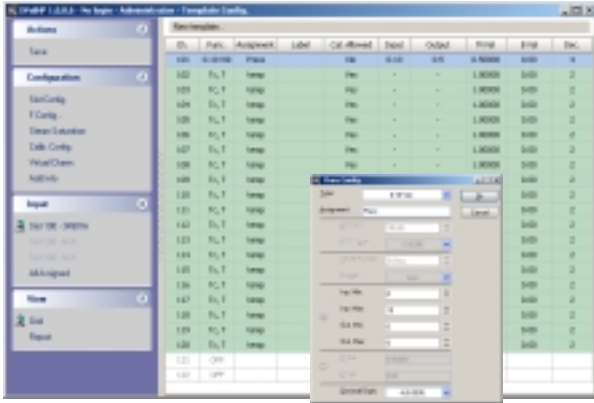
Equipment Identification



Administration



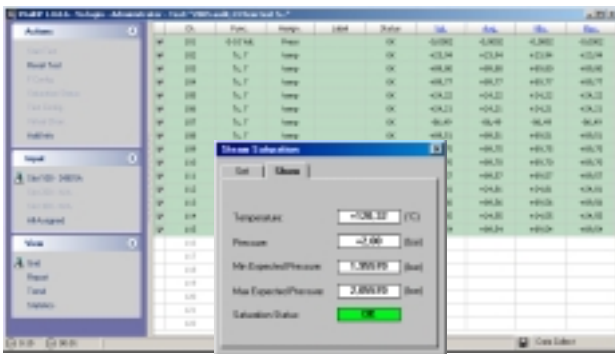
Template



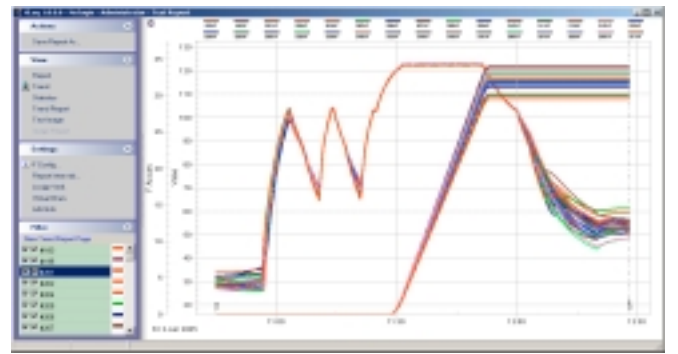
Thermocouple Calibration



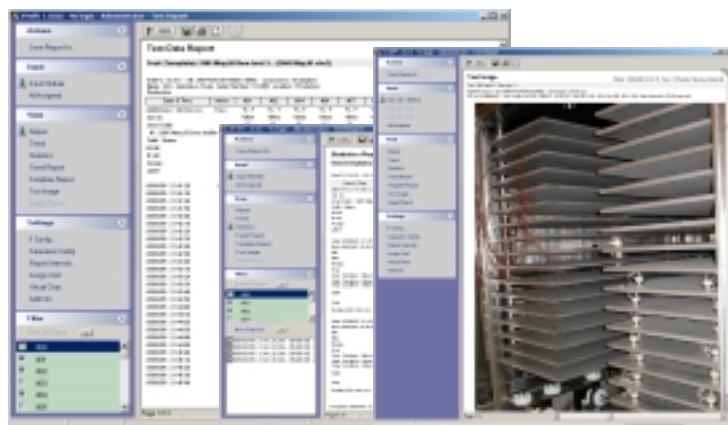
Data Acquisition – Saturated Steam



Real Time Trending



Reports generated automatically: data, trends, statistics and image



21 CFR Part 11 - Audit Trail

