



XpertVal[®] - 21 channels

Temperature Block Lives
Excellent Stability and Speed
Range of temperatures:
- -45 to 155 °C
- 50 to 650 °C

Temperature Standard High Accuracy
RTD connected directly to the block for calibration and regulation

Validation Software XpertVal[®]
FDA 21 CFR Part 11 Compliant
A Secure and Efficient Way to Conduct Validation Studies

Data Logger with Universal Module:
- thermocouples; PT 100;
- 4-20mA, 0-10V, 0-1V etc...



Software XpertVal[®]

Hardware

Easy to Learn and Use – design consulted, reviewed, and influenced by validation personnel with “real” field experience.

Secure Access, Instrument Identification and Data Traceability – complete cross-reference of the instruments, users, and time of events for the calibration and test files. User identification (ID and password) required for system access and use. Audit trails generated automatically on event.

Automatic Thermocouple Calibration and Test Control – user-selected temperature block (e.g. Lives) and Temperature Reference Standard fully controlled by the software. Auto Start, Stop, and Test Data Reset user-configurable.

Data Protection – raw data stored on the data logger removable PCMCIA card (SRAM memory) and in a protected file on the PC drive; **FDA 21 CFR Part 11 compliant**

Calibration/Qualification/Statistical Reports, and Trends – user-configurable, generated automatically including during data acquisition.

Export & Import – administrator-configurable for calibration and test files. Data availability for custom reports and “off-line” data analyses.

GENERAL FEATURES : Comply with EC & USA thermal validation regulations
cGMP, EN554, EN285, HTM 2010 compliant

Data Logger - Hydra Series II manufactured by Fluke Co. The advanced built-in signal conditioning and removable, universal input module simplifies sensor connection and operation. Fully isolated, channel-to-channel, input-to-input, and input-to-ground circuitry. A sturdy metal chassis designed for a demanding industrial environment. 21 Channels available for the thermocouples and other sensors (e.g. 0-5 VDC, 4-20 ma, etc.). The removable memory card storage and fail-safe features (e.g. Open Thermocouple Detection) protect collected data. Low-cost closed-case calibration assures reliability and traceability.

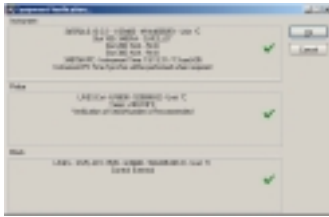
Temperature Reference Standard - Lives - a high accuracy RTD based reference probe. Includes communication feature with the temperature block. Can be connected to external display Ametek or Hart. Provides traceable measurement accuracy, portability, and rugged, field- proven design.

XpertVal[®] also controls Reference Thermometers and Smart Probes from other manufacturers.

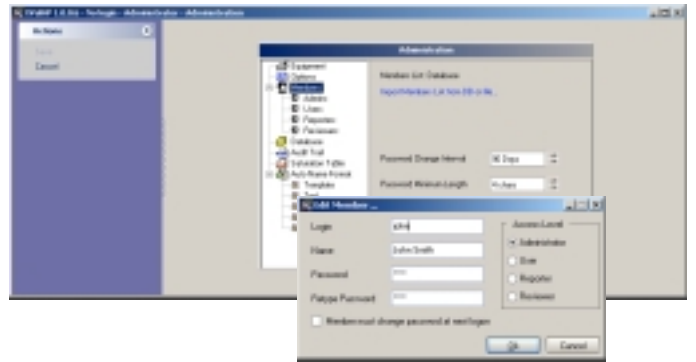
Temperature Source, Dry-Block - Lives ATC Series
Range of temperatures: -45 to 155°C, -30 to 155 °C, 50 to 320 °C, or 50 to 650 °C.
High Accuracy Dry-Block with Dual-Zone heating/cooling, large display, and advanced but simple-to-use features. The most stable, accurate, and fastest temperature dry-block on the market.

XpertVal[®] also controls baths and blocks from other manufacturers.

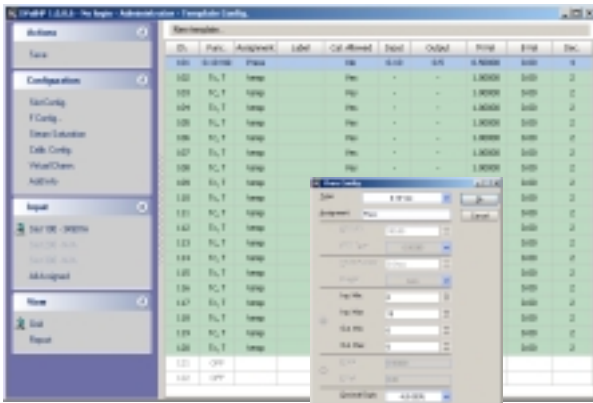
Equipment Identification



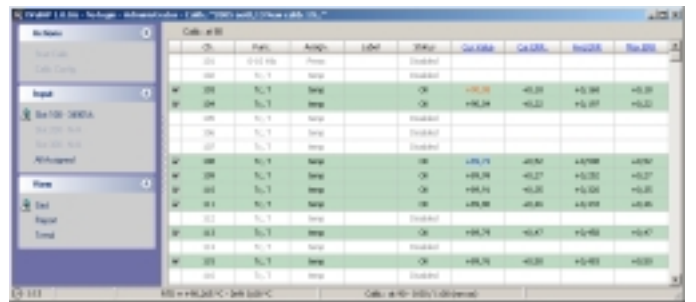
Administration



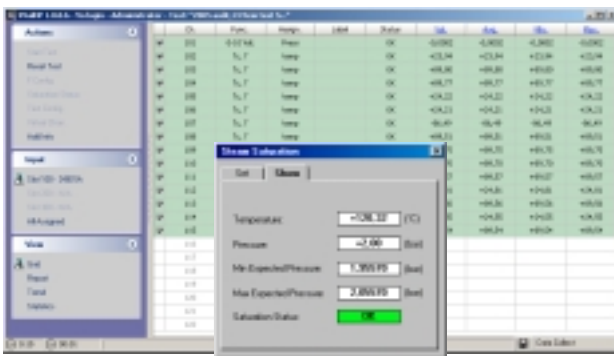
Template



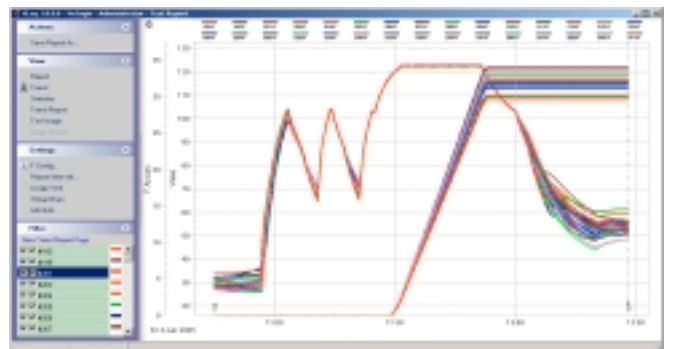
Thermocouple Calibration



Data Acquisition – Saturated Steam



Real Time Trending



Reports generated automatically: data, trends, statistics and image

21 CFR Part 11 - Audit Trail

